

Phaser®
3635MFP
Black-and-white
Multifunction
Printer



Xerox Phaser® 3635MFP Multifunction Printer

Multifunction power,
workgroup productivity



Phaser® 3635MFP Multifunction Printer

Print. Copy. Scan. Fax. Email. The Xerox Phaser 3635MFP multifunction printer gets your critical office tasks done with speed and efficiency, delivering a powerful all-in-one solution at a hard-to-beat price.

More capabilities for more people

A powerful workgroup multitasker, the Phaser 3635MFP delivers a set of features that, until now, you'd only find on large, departmental MFPs.

35
ppm

- **Fast results.** A quick print and copy speed of up to 35 ppm easily keeps pace with your workgroup print demands, while a single-page print job is out as quickly as 8.5 seconds!
- **Powerful scanning.** Capture and share your documents with advanced scanning tools.
- **Digitize, organize, distribute.** Maximize your hardware investments, and manage and distribute documents more effectively, with innovative Xerox Workflow Solutions (built on Xerox EIP technology) and software solutions from Xerox Business Partners. When you integrate paper and digital documents, you can easily create, search, reuse, share, and build upon your office documents while containing costs and accelerating workflows.
- **Enhanced security.** Hold private print and fax jobs in the queue until they're released at the device by the job owner. Image data from the device's memory can be automatically "shredded" after every job or on request, and you can easily limit or restrict access to device functions for enhanced security.
- **Impressive results.** 600 x 600 dpi printing (up to 1200 x 1200 enhanced image quality) delivers outstanding print resolution without slowing down the all-around exceptional performance.
- **Save paper, save money.** Standard automatic two-sided printing and copying reduces paper usage, while helpful features like N-up and booklet printing let you easily create documents like handouts and presentation packs.

The Xerox experience: a familiar advantage

With the same walk-up simplicity our larger devices are known for, the Phaser 3635MFP gives your workgroup all-in-one productivity that's totally Xerox.

- **Big functions, small size.** Whether on a desktop or as a floor-standing unit (with optional cabinet stand), the small size fits where you need it and replaces single-function machines with one convenient multifunction solution.
- **Truly helpful.** The 7-inch, full-color, touch-screen control panel makes walk-up operation extremely intuitive. Need assistance? Press the Help button and access online answers to common questions. Messages, screen instructions and graphics provide even more useful information.
- **More control.** Xerox Standard Accounting software provides accounting features that let you track and analyze device usage by function for greater cost control.
- **Workflows made easy.** Simple controls let you set up the touch-screen to prioritize the functions your staff uses most, while a host of optional solutions offered by Xerox and third-party providers make the Phaser 3635MFP even more useful.
- **Easy adaptability.** Engineered to easily meet the needs of any industry, the Phaser 3635MFP features Xerox® Workflow Solutions (built on the Xerox® Extensible Interface Platform®), which enables personalized, business-specific applications you can access right from the color touch screen.

Easy to operate and maintain

Designed top to bottom for optimum ease of use, seamless network integration and unbeatable reliability.

- **IT-friendly.** Network printing is easier than ever to manage. CentreWare® IS internal web server allows administrators to remotely monitor printer status, configure settings and receive alerts. For enterprise-level printer management, CentreWare® Web makes it easy to install, configure, obtain reports and troubleshoot all network devices, regardless of manufacturer.
- **Ready for action.** Installation is extremely fast and easy, getting your device up and running on the network in minutes.
- **Easy supplies replacement.** All-in-one, user-replaceable print cartridges greatly reduce time spent on device interventions. Simply replace one cartridge and you're back in business.
- **More productive, longer.** With a robust monthly duty cycle of up to 75,000 pages, the Phaser 3635MFP is built to produce at a consistently high level.
- **An easy fit.** Network integration has never been easier, and with built-in LDAP support, your system administrator can upload your company's address book directly to the device for fast access to recipients' email addresses and fax numbers.
- **The Xerox-exclusive Print Around feature** holds a job needing resources (such as a different paper size) and prints the next job in the queue.

Phaser® 3635MFP Quick Facts

- Print and copy up to 35 ppm
- 600 x 600 dpi (up to 1200 x 1200 enhanced image quality)
- Powerful 360 MHz processor
- 75,000 pages/month duty cycle
- 256 MB memory (expandable to 512 MB) plus 80 GB Hard Drive



Print / Copy / Scan / Fax / Email

8.5 x 11 in.

35 ppm

WxDxH:

18.6 x 18.8 x 21.4 in.
472 x 478 x 543 mm



- 1 **Duplex Automatic Document Feeder** gives you convenient, money-saving, two-sided output across all functions — printing, copying, scanning and faxing — on a variety of media.
- 2 **80 GB internal hard drive** lets you handle more tasks at the device. Use the Save Print feature to keep frequently used documents available for quick printing on the go.
- 3 **Advanced faxing capabilities** include Embedded Fax and LAN Fax (for paperless faxing right from your desktop), plus Fax Folders, Secure Fax Receive and fax forwarding options (available on 3635MFP/X configuration). The Network Fax Server enablement option and other third-party solutions create even more fax workflow possibilities.
- 4 **One-touch power-down** allows fast and simple switching to power save mode or device shut-off during periods of extended down time. Another press of the button quickly restores power.



- 5 **USB direct printing/scanning** lets you save to or print directly from any USB memory drive. Quickly scan a hard copy document and save it on your USB drive for portable storage on the go, or walk up and print with no computer needed.
- 6 **A built-in convenience stapler** lets you staple documents at the device and quickly be on your way (3635MFP/X configuration).
- 7 **Add an optional 500-sheet paper tray** to boost total paper capacity to 1,050 sheets.

Advanced scanning, simplified

With the power of scanning built-in, the Phaser 3635MFP multifunction printer delivers cutting-edge yet easy-to-use solutions for seamlessly creating, organizing and distributing business-critical digital files.

- **Store on the device**

- **Copy to Hard Drive**

- Copies files to the device's hard drive for easy walk-up retrieval

- **Routing made easy**

- **Network Scanning**

- Uses templates to send scanned images to predefined locations

- **Scan to Email**

- Sends scans to email recipients directly from the front panel

- **Scan to USB**

- Scans can be loaded directly onto a user's portable USB storage device

- **Xerox SMARTsend™**

- Scanning software (optional) that lets you send documents to multiple destinations — email, folders, or other devices — from a single scan, using a pre-set workflow.

- **Repurpose documents**

- **Xerox Scan to PC Desktop®**

- Provides helpful tools for editing and document manipulation

- **Faster file delivery**

- **Compression Technology**

- Compresses file size for fast delivery and reduced network load

- **Convert documents**

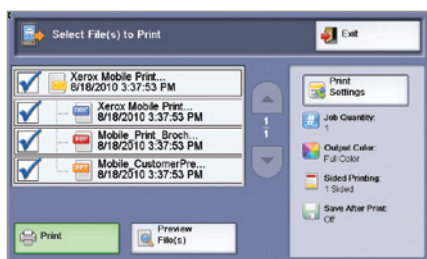
- **Multiple Formats**

- Scans can be saved in PDF, TIFF or JPEG format



So advanced it's simple, the cutting-edge, 7-inch, full-color touch screen redefines walk-up ease-of-use. Whether printing, copying, scanning, faxing or emailing, the bright, colorful display guides you from start to finish with large, clear, easily recognizable icons.

Xerox Workflow Solutions take your Phaser 3635MFP multifunction printer to a higher level of office optimization.



Xerox Mobile Print Solution is just one of many personalized solutions you access right from the touch screen interface.

Transform the way your organization gets vital work done with the power of Xerox Workflow Solutions. When people work efficiently, in less time and with fewer steps, productivity goes up. Stress goes down. So do errors. Whether you have only a few people on your team or a very large workgroup, Xerox knows it's about streamlining your workflow — and it starts by using Xerox Workflow Solutions right from your Phaser 3635MFP multifunction printer.

Xerox Mobile Print Solution

With Xerox, being mobile has never been easier. Xerox makes mobile printing simpler and more convenient, while keeping your business secure. That's why we're empowering today's mobile professionals with the freedom to send print jobs from any email-enabled device.

Phaser® 3635MFP

Black-and-White Multifunction Printer



	Phaser 3635MFP/S	Phaser 3635MFP/X
Speed	Up to 35 ppm letter / 33 ppm A4	
Duty Cycle	Up to 75,000 pages / month	
Paper Handling	Duplex Automatic Document Feeder: 60 sheets; Size: 5.5 x 8.5 in. to 8.5 x 14 in. / 148 x 210 mm to 216 x 356 mm; Weight: 12 to 28 lb / 50 to 120 gsm Bypass Tray: 50 sheets; Size: 3.9 x 5.8 in. to 8.5 x 14 in. / 98 x 148 mm to 216 x 356 mm; Weight: 16 to 43 lb / 60 to 163 gsm Tray 1: 500 sheets; Size: 5.85 x 8.27 in. to 8.5 x 14 in. / 148 x 210 mm to 216 x 356 mm; Weight: 16 to 28 lb / 60 to 105 gsm; Standard selectable sizes up to 8.5 x 14 / A4 Tray 2: 500 sheets	
Output	250 sheets, automatic two-sided	
Finishing	NA	Offline Convenience Stapler: 20-sheet, single position
Print		
First-page-out-time	As fast as 8.5 seconds	
Print resolution	600 x 600 dpi (up to 1200 x 1200 enhanced image quality)	
Memory (standard / max)	256 MB / 512 MB plus 80 GB Hard Drive	
Processor	360 MHz	
Language support	PostScript® 3™ compatibility, PCL® 6 and 5e emulations	
Connectivity	10/100 BaseT Ethernet, USB 2.0	
Print features	Custom page size, Automatic two-sided, Watermark, Secure print, Sample set, Delayed print, Cover selection, Paper selection by attribute, Toner saver, N-Up, Mirror image, Negative image, Image rotation, Saved settings, Booklet creation, Fit to new paper size, Collation, Print to Hard Drive, Print from Hard Drive, Print from USB memory drive	
Copy		
First-page-out time	As fast as 8.5 seconds	
Copy resolution	600 x 600 dpi	
Copy features	Automatic two-sided, Collation, Reduce/Enlarge 25 to 400% from platen and ADF, Book copying, Mixed-size originals, Edge erase, Image shift, Booklet creation, Covers, Auto paper select, Lighten/darken, Transparency Separators, Multi-Up, ID Card Copy, Copy to Hard Drive, Background suppression	
Fax	NA	Embedded Fax (33.6 Kbps with MH, MR, MMR, JPEG and JBIG compression)*, LAN Fax
Fax features	NA	Up to 600 x 600 dpi (superfine) resolution, Color Fax send, Address Book, Priority send, Fax reports, Junk fax list, Junk fax prevention, Background suppression, Mailboxes, Polling, Forward to Fax / Email, Secure Fax, Fax broadcast
Scan		
Scan destinations	Scan to Email, Network Scanning, Scan to USB memory drive	
Scan features	Up to 600 x 600 dpi; File formats: PDF, JPEG, TIFF, Multi-page TIFF; Xerox Scan to PC Desktop® Personal Edition (Includes 1 seat of OmniPage®, PaperPort®, and Image Retriever for use with network scanning), Color Scanning, FTP, HTTP, HTTPS, SMB	
Accounting	Xerox Standard Accounting (tracks copy, print, scan, fax), Network Accounting enablement supports optional Xerox Alliance Partner Solutions	
Security	Image Overwrite Security, SSL, Authentication, 802.1X, SNMPv3, IP Filtering, Audit Log, HTTPS, Secure Print, Secure Fax	
Options	Foreign Device Interface, 256 MB Memory Upgrade, Cabinet Stand, Network Accounting Enablement, Network Fax Server Enablement	
Warranty	One Year On-Site Warranty, Xerox Total Satisfaction Guarantee	

* Analog phone line required

Device Management

CentreWare® Internet Services, CentreWare Web, CentreWare for HP OpenView, CentreWare for IBM Tivoli NetView, CentreWare for Unicenter, CentreWare® Management Pack for Microsoft System Center Operations Manager (SCOM), Xerox Novell Distributed Print Services Solution (NDPS)

Print Drivers

Windows 2003 Server/XP/XP Professional/Vista, Macintosh OS X v10.3, Solaris 9/10, Red Hat ES, Linux, Fedora Core 4, SUSE, AIX 5, HP-UX 11.0/11i

Media Handling

Media Types: Plain paper, recycled, bond, lightweight, heavyweight, envelopes, labels, transparencies, punched, letterhead, pre-printed, archive

Operating Environment

Temperature: Maximum Range: 50°–90°F / 10°–32°C, Recommended Range: 61°–86°F / 16°–30°C



Humidity: Maximum Range: 20–80%, Recommended Range: 30–70%
 Electrical: Power: 110–127 VAC and 220–240 VAC, 50/60 Hz,
 Power Consumption: Average: 600 watts, Standby: 55 W,
 Power Saver mode: 15 W, ENERGY STAR® Qualified

Dimensions (WxDxH)

18.6 x 18.8 x 21.4 in. / 472 x 478 x 543 mm; Weight: 48.6 lbs. / 22.1 kg

Agency Approvals

Listed to UL 60950-1/CSA 22.2 No. 60950-1-03, Class 1 Laser Product, FCC Part 15, Class A, CE marked in accordance with Low Voltage Directive, 2006/95/EC and EMC Directive 2004/108/EC, CB Certified against IEC 60950, Section 508 ADA, Cerner Tested and Certified

What's in the box

- Phaser 3635MFP Multifunction Printer
- Print Cartridge (5,000 print capacity)
- World Kit (includes Printer Installer and utilities CD, Software and documentation CD and Warranty booklet)
- Power cord

Supplies and Options

High Capacity Print Cartridge – approx. 10,000 ¹	108R00795
Standard Print Cartridge – approx. 5,000 pages ²	108R00793
Network Accounting Enablement	098S04928
Network Fax Server Enablement	098S04931
256 MB Memory Upgrade	098N02189
Paper Tray	098N02190
Stand	097N01674
Foreign Device Interface Kit	097N01676
Staple Cartridge	108R00823

¹ Declared Yield in accordance with ISO/IEC 19752. Yield will vary based on image, area coverage and media used.

² Yield will vary depending on job run length, media size and orientation

Call today. For more information, call **1-877-362-6567** or visit us at **www.xerox.com/office**



©2011 Xerox Corporation. All rights reserved. XEROX® and XEROX and Design®, CentreWare®, Phaser®, PhaserSMART® and PrintingScout® are trademarks of Xerox Corporation in the United States and/or other countries. ENERGY STAR® is a U.S. registered mark. As an ENERGY STAR® Partner, Xerox Corporation has determined that these products meet the ENERGY STAR® guidelines for energy efficiency. All other trademarks are the property of their respective manufacturers. Product information and/or specifications are subject to change without notice. Updated 12/11 610P729655I 363BR-01UJ